

Product Range International 2016

PVC-U

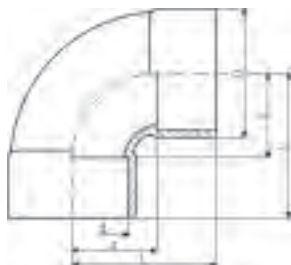


Fittings



Bend 90° PVC-U metric

d (mm)	PN (bar)	Code	Weight (kg)	z (mm)	D (mm)	L (mm)
20	16	721 000 106	0.029	40	27	56
25	16	721 000 107	0.049	50	33	69
32	16	721 000 108	0.074	64	38	86
40	16	721 000 109	0.121	80	47	106
50	16	721 000 110	0.298	100	61	131
63	16	721 000 111	0.516	126	76	164
75	16	721 000 112	0.798	150	90	194
90	16	721 000 113	1.373	180	108	231
110	16	721 000 114	2.699	220	137	281
140	16	721 000 116	5.204	280	168	356
160	16	721 000 117	8.298	320	192	406



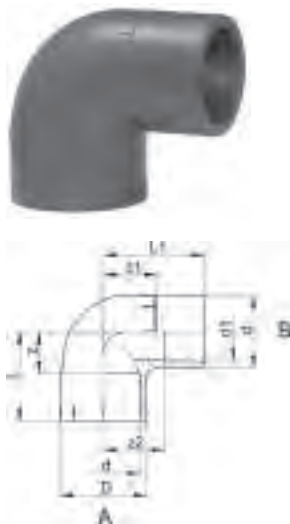
Bend 90° short pattern PVC-U metric

d (mm)	PN (bar)	Code	Weight (kg)	z (mm)	D (mm)	L (mm)
225	10	721 010 120	7.554	168	256	287
280	10	721 010 122	16.987	210	318	357
315	6	721 010 123	21.567	237	356	402
400	6	721 010 125	30.000	300	442	521



Elbow 90° PVC-U metric

d (mm)	d (inch)	PN (bar)	Code	Weight (kg)	z (mm)	D (mm)	L (mm)
6		16	721 100 101	0.004	4	11	16
8		16	721 100 102	0.004	5	13	17
10		16	721 100 103	0.004	6	14	18
12		16	721 100 104	0.006	7	17	19
16		16	721 100 105	0.007	9	21	23
20		16	721 100 106	0.012	11	25	27
25		16	721 100 107	0.024	14	32	33
32		16	721 100 108	0.043	17	40	39
40		16	721 100 109	0.062	23	47	49
50		16	721 100 110	0.106	26	59	57
63		16	721 100 111	0.205	33	73	71
75	2 1/2	16	721 100 112	0.336	40	87	83
90		16	721 100 113	0.576	46	105	97
110		16	721 100 114	1.009	55	128	116
125		16	721 100 115	1.522	63	146	131
140	5	16	721 100 116	1.945	70	162	146
160		16	721 100 117	2.873	80	185	166
200		10	721 100 119	4.446	101	225	207
225		10	721 100 120	5.989	114	252	233
250		10	721 100 121	10.014	131	282	263



PRO-FIT elbow 90° PVC-U metric

Model:

- Outlet: A = solvent cemented socket metric
- Outlet: B = solvent cemented spigot in combination with reducing socket metric
- Direct connection from fitting to fitting allowing shortest possible overall length

d (mm)	d1 (mm)	PN (bar)	Code	Weight (kg)	z (mm)	z1 (mm)	z2 (mm)	D (mm)	L (mm)	L1 (mm)
20	16	16	721 100 306	0.011	11	16	18	25	27	32
25	20	16	721 100 307	0.020	14	18	21	31	33	37
32	25	16	721 100 308	0.038	17	22	25	38	39	44
40	32	16	721 100 309	0.069	23	30	34	47	49	56
50	40	16	721 100 310	0.122	26	36	41	58	57	67
63	50	16	721 100 311	0.237	33	45	52	73	71	83

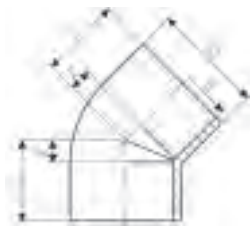


PRO-FIT elbow 45° PVC-U metric

Model:

- Outlet: A = solvent cemented socket metric
- Outlet: B = solvent cemented spigot in combination with reducing socket metric
- Direct connection from fitting to fitting allowing shortest possible overall length

d	d1	PN	Code	Weight	z	z1	z2	D	L	L1
(mm)	(mm)	(bar)		(kg)	(mm)	(mm)	(mm)	(mm)	(mm)	(mm)
20	16	16	721 150 306	0.010	5	9	11	25	21	25
25	20	16	721 150 307	0.015	6	11	14	31	25	30
32	25	16	721 150 308	0.027	8	13	16	38	30	35
40	32	16	721 150 309	0.053	10	17	21	47	36	43
50	40	16	721 150 310	0.090	12	18	23	58	43	49
63	50	16	721 150 311	0.175	14	23	30	73	52	61



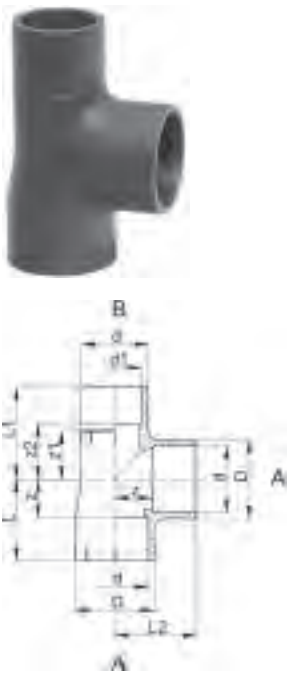
Elbow 45° PVC-U metric

d	d	PN	Code	Weight	z	D	L
(mm)	(inch)	(bar)		(kg)	(mm)	(mm)	(mm)
16		16	721 150 105	0.008	5	21	19
20		16	721 150 106	0.011	5	25	21
25		16	721 150 107	0.017	6	31	25
32		16	721 150 108	0.021	8	38	30
40		16	721 150 109	0.048	10	47	36
50		16	721 150 110	0.086	12	59	43
63		16	721 150 111	0.160	14	73	52
75	2 ½	16	721 150 112	0.253	17	87	61
90		16	721 150 113	0.430	20	105	71
110		16	721 150 114	0.750	25	127	86
125		16	721 150 115	1.193	28	146	97
140	5	16	721 150 116	1.570	32	162	108
160		16	721 150 117	2.280	36	185	122
200		10	721 150 119	3.288	43	225	149
225		10	721 150 120	4.191	49	250	168
250		10	721 150 121	7.115	60	282	192
280		10	721 150 122	10.340	66	318	213
315		6	721 150 123	14.292	74	356	239
400		6	721 150 125	25.268	94	442	302



Tee 90° equal PVC-U metric

d (mm)	d (inch)	PN (bar)	Code	Weight (kg)	D (mm)	L (mm)	z (mm)
6		16	721 200 101	0.004	11	16	4
8		16	721 200 102	0.008	13	17	5
10		16	721 200 103	0.008	16	18	6
12		16	721 200 104	0.011	19	19	7
16		16	721 200 105	0.011	21	23	9
20		16	721 200 106	0.019	25	27	11
25		16	721 200 107	0.029	31	33	14
32		16	721 200 108	0.055	38	39	17
40		16	721 200 109	0.100	48	49	23
50		16	721 200 110	0.156	58	57	26
63		16	721 200 111	0.291	73	71	33
75	2 1/2	16	721 200 112	0.476	87	83	39
90		16	721 200 113	0.824	105	97	46
110		16	721 200 114	1.411	127	116	55
125		16	721 200 115	2.521	151	135	66
140	5	16	721 200 116	3.410	169	147	71
160		16	721 200 117	4.982	193	167	81
200		10	721 200 119	5.868	225	207	101
225		10	721 200 120	9.268	256	233	114
250		10	721 200 121	14.350	282	263	132
280		10	721 200 122	19.541	318	298	152
315		6	721 200 123	27.254	356	332	168
400		6	721 200 125	35.000	442	420	214

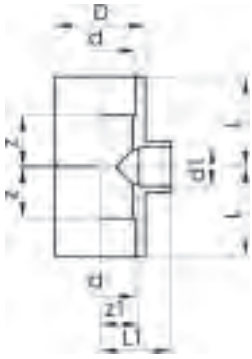


PRO-FIT tee 90° equal PVC-U metric

Model:

- Outlet: A = solvent cemented socket metric
- Outlet: B = solvent cemented spigot in combination with reducing socket metric
- Direct connection from fitting to fitting allowing shortest possible overall length

d (mm)	d1 (mm)	PN (bar)	Code	Weight (kg)	z (mm)	z1 (mm)	z2 (mm)	D (mm)	L (mm)	L1 (mm)	L2 (mm)
20	16	16	721 200 306	0.017	11	17	19	25	27	33	27
25	20	16	721 200 307	0.022	14	19	22	31	33	38	33
32	25	16	721 200 308	0.051	17	24	27	38	39	46	39
40	32	16	721 200 309	0.098	23	30	34	47	47	56	49
50	40	16	721 200 310	0.164	26	36	41	58	57	67	57
63	50	16	721 200 311	0.329	33	45	52	73	71	83	71



Tee 90° reducing PVC-U metric

d (mm)	d1 (mm)	PN (bar)	d-d (inch)	Code	Weight (kg)	z (mm)	z1 (mm)	D (mm)	L (mm)	L1 (mm)
25	20	16		721 200 134	0.038	14	14	33	33	30
32	20	16		721 200 141	0.061	17	17	41	39	33
32	25	16		721 200 138	0.063	17	17	41	39	36
40	20	16		721 200 155	0.103	23	23	50	49	39
40	25	16		721 200 151	0.107	23	23	50	49	42
40	32	16		721 200 147	0.109	23	23	50	49	45
50	20	16		721 200 009	0.179	28	28	62	59	44
50	25	16		721 200 010	0.183	28	28	62	59	47
50	32	16		721 200 164	0.189	28	28	62	59	50
50	40	16		721 200 161	0.208	28	28	62	59	54
63	25	16		721 200 011	0.332	35	34	77	73	53
63	32	16		721 200 178	0.336	35	34	77	73	56
63	40	16		721 200 174	0.347	35	34	77	73	60
63	50	16		721 200 170	0.354	35	34	77	73	65
75	32	16		721 200 181	0.535	40	41	92	84	63
75	40	16		721 200 182	0.555	40	41	92	84	67
75	50	16		721 200 183	0.541	40	41	92	84	72
75	63	16		721 200 184	0.570	40	41	92	84	79
90	32	16		721 200 142	0.855	46	55	110	97	77
90	50	16		721 200 144	0.907	46	55	110	97	86
90	63	16		721 200 145	0.931	46	55	110	97	93
90	75	16		721 200 146	0.959	46	55	110	97	99
110	32	16		721 200 135	1.441	56	67	133	117	89
110	50	16		721 200 136	1.471	56	67	133	117	98
110	63	16		721 200 132	1.522	56	65	133	117	103
110	75	16		721 200 133	1.543	56	65	133	117	109
110	90	16		721 200 137	1.634	56	65	133	117	116
125	50	16		721 200 139	1.970	64	75	151	133	106
125	90	16		721 200 140	2.200	64	75	151	133	126
140	50	16		721 200 148	3.235	72	82	172	148	113
140	75	16	5 - 2 1/2	721 200 149	3.319	72	78	172	148	122
140	110	16		721 200 150	3.422	72	74	172	148	135
160	110	16		721 200 152	4.305	81	81	192	167	142
200	110	10		721 200 153	8.782	107	131	232	213	192
200	160	10		721 200 154	8.036	107	106	232	213	192
225	110	10		721 200 156	10.619	120	143	257	239	204
225	160	10		721 200 157	9.760	120	119	257	239	205
250	160	10		721 200 159	14.520	132	151	282	263	237
250	200	10		721 200 162	12.213	132	131	282	263	237
280	160	10		721 200 165	18.402	120	180	318	266	266
280	225	10		721 200 167	16.145	120	148	318	266	268
315	160	6		721 200 169	22.189	120	197	356	284	283
315	225	6		721 200 172	20.154	120	165	356	284	284
400	225	6		721 200 176	40.000	163	258	442	369	377
400	315	6		721 200 180	35.000	163	213	442	369	377



Cross PVC-U metric

d (mm)	d (inch)	PN (bar)	Code	Weight (kg)	D (mm)	L (mm)	z (mm)
10		16	721 300 103	0.009	16	19	7
12		16	721 300 104	0.010	18	20	8
16		16	721 300 105	0.020	23	24	10
20		16	721 300 106	0.036	29	27	11
25		16	721 300 107	0.054	35	33	14
32		16	721 300 108	0.092	43	39	17
40		16	721 300 109	0.155	52	49	23
50		16	721 300 110	0.259	63	59	28
63		16	721 300 111	0.482	79	72	34
75	2 ½	10	721 300 112	0.725	92	83	40
90		10	721 300 113	1.221	106	97	48
110		10	721 300 114	2.111	128	117	59



Tee 45° PVC-U metric

d (mm)	d (inch)	PN (bar)	Code	Weight (kg)	z (mm)	z1 (mm)	D (mm)	L (mm)	L1 (mm)
10		10	721 250 103	0.013	18	4	16	46	30
12		10	721 250 104	0.014	21	4	18	49	33
16		10	721 250 105	0.022	25	5	23	58	39
20		10	721 250 106	0.035	30	6	28	68	46
25		10	721 250 107	0.056	36	9	33	83	55
32		10	721 250 108	0.096	45	10	41	99	67
40		10	721 250 109	0.159	56	10	50	118	82
50		10	721 250 110	0.265	66	12	60	140	97
63		10	721 250 111	0.439	85	14	74	175	123
75	2 ½	6	721 250 112	0.816	101	18	91	207	145
90		6	721 250 113	1.275	122	20	107	245	173
110		6	721 250 114	2.579	149	27	134	298	210
125		6	721 250 115	3.616	167	30	147	335	236
140	5	6	721 250 116	5.628	190	34	168	376	266
160		6	721 250 117	7.187	213	41	190	428	300
200		6	721 250 119	12.314	265	48	232	527	372
225		6	721 250 120	15.735	296	54	260	590	416
250		6	721 250 121	20.350	330	60	286	654	462



Socket equal PVC-U metric

¹ Socket d355 and d400 fabricated from pipe

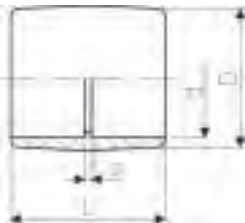
d (mm)	d (inch)	PN (bar)	Code	Weight (kg)	z (mm)	D (mm)	L (mm)
6		16	721 910 101	0.004	3	12	27
8		16	721 910 102	0.005	3	14	27
10		16	721 910 103	0.004	3	16	27
12		16	721 910 104	0.004	3	19	27
16		16	721 910 105	0.006	3	22	31
20		16	721 910 106	0.011	3	26	35
25		16	721 910 107	0.015	3	32	41
32		16	721 910 108	0.026	3	39	47
40		16	721 910 109	0.045	3	48	55
50		16	721 910 110	0.064	3	58	65
63		16	721 910 111	0.118	3	73	79
75	2 ½	16	721 910 112	0.188	4	87	92

table continued on the next page



d (mm)	d (inch)	PN (bar)	Code	Weight (kg)	z (mm)	D (mm)	L (mm)
90		16	721 910 113	0.328	5	105	107
110		16	721 910 114	0.554	6	128	128
125		16	721 910 115	0.825	7	142	145
140	5	16	721 910 116	1.118	7	162	159
160		16	721 910 117	1.540	8	183	180
200		10	721 910 119	2.559	9	221	221
225		10	721 910 120	3.519	10	253	248
250		10	721 910 121	5.394	16	284	284
280		10	721 910 122	8.312	16	321	314
315		6	721 910 123	10.388	16	356	348
1	355	6	721 910 124	10.706	68	377	454
1	400	6	721 910 125	11.326	73	425	505

Socket equal PVC-U transparent metric



d (mm)	PN (bar)	Code	Weight (kg)	z (mm)	D (mm)	L (mm)
16	16	752 910 105	0.009	3	23	31
20	16	752 910 106	0.012	3	27	35
25	16	752 910 107	0.016	3	32	41
32	16	752 910 108	0.027	3	40	47
40	16	752 910 109	0.061	3	52	55
50	16	752 910 110	0.068	3	60	65
63	16	752 910 111	0.115	3	75	79

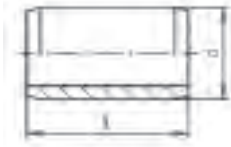
Adaptor socket PVC-U metric Inch/BS

Model:

- With solvent cement sockets metric and BS inch



d (mm)	d (inch)	PN (bar)	Code	Weight (kg)	z (mm)	D (mm)	L (mm)
16	¾	16	721 913 105	0.010	5	23	35
20	½	16	721 913 106	0.012	5	27	38
25	¾	16	721 913 107	0.020	5	33	45
32	1	16	721 913 108	0.031	5	41	51
40	1 ¼	16	721 913 109	0.054	5	51	60
50	1 ½	16	721 913 110	0.074	4	59	65
63	2	16	721 913 111	0.155	5	75	79
90	3	16	721 913 113	0.340	6	104	108
110	4	16	721 913 115	0.488	4	128	128



Barrel nipple PVC-U metric

Model:

- With solvent cement spigots on both sides
- Overall length L = 2 x socket length
- For the shortest possible distance between fittings

d (mm)	d (inch)	PN (bar)	Code	Weight (kg)	L (mm)
16		16	721 900 905	0.002	28
20		16	721 900 906	0.005	32
25		16	721 900 907	0.009	38
32		16	721 900 908	0.015	44
40		16	721 900 909	0.027	52
50		16	721 900 910	0.048	62
63		16	721 900 911	0.092	76
75	2 ½	16	721 900 912	0.156	88
90		16	721 900 913	0.260	102
110		16	721 900 914	0.455	122
125		16	721 900 915	0.673	138
140	5	16	721 900 916	0.932	152
160		16	721 900 917	1.565	192
200		10	721 900 919	1.779	212
225		10	721 900 920	2.566	238



Cap PVC-U metric

d (mm)	d (inch)	PN (bar)	Code	Weight (kg)	D (mm)	L (mm)
12		16	721 960 104	0.004	19	15
16		16	721 960 105	0.005	23	21
20		16	721 960 106	0.008	27	24
25		16	721 960 107	0.013	33	28
32		16	721 960 108	0.020	40	32
40		16	721 960 109	0.029	47	38
50		16	721 960 110	0.051	59	45
63		16	721 960 111	0.095	74	56
75	2 ½	16	721 960 112	0.152	87	65
90		16	721 960 113	0.269	105	77
110		16	721 960 114	0.457	128	94
140	5	10	721 960 116	1.036	164	92
160		10	721 960 117	1.534	188	130
200		10	721 960 119	2.614	230	170
225		10	721 960 120	3.320	257	185
280		10	721 960 122	6.200	318	230
315		6	721 960 123	8.500	356	255

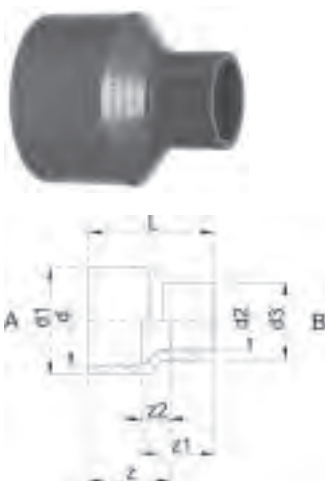


Reducing bush long PVC-U metric

Model:

- With solvent cement spigot and socket metric

d (mm)	d2 (mm)	PN (bar)	Code	Weight (kg)	z (mm)	L (mm)
8	6	16	721 910 323	0.003	15	27
10	6	16	721 910 326	0.003	15	27
10	8	16	721 910 325	0.003	15	27
20	16	16	721 910 334	0.009	21	35
25	20	16	721 910 337	0.014	25	41
32	25	16	721 910 341	0.024	30	49
40	32	16	721 910 346	0.044	36	58
50	40	16	721 910 352	0.074	44	70
63	50	16	721 910 358	0.148	54	85
75	63	16	721 910 364	0.211	62	100
90	75	16	721 910 370	0.335	74	118
140	110	16	721 910 385	0.808	111	172



PRO-FIT reducing bush PVC-U metric

Model:

- Outlet: A and B = solvent cemented spigot in combination with reducing socket metric

d (mm)	d1 (mm)	d3 (mm)	PN (bar)	d2 (mm)	Code	Weight (kg)	z (mm)	z1 (mm)	z2 (mm)	L (mm)
10	14	12	16	8	721 910 903	0.003	15	15	3	27
12	16	12	16	8	721 910 905	0.004	18	18	6	30
12	16	16	16	10	721 910 906	0.004	18	18	6	30
16	20	16	16	10	721 910 908	0.003	21	19	7	33
16	20	16	16	12	721 910 909	0.004	21	19	7	33
20	25	16	16	12	721 910 910	0.008	25	21	9	37
20	25	20	16	16	721 910 911	0.008	25	23	9	39
25	32	16	16	12	721 910 912	0.014	30	23	11	42
25	32	20	16	16	721 910 913	0.015	30	26	12	44
25	32	25	16	20	721 910 914	0.017	30	27	11	46
32	40	20	16	16	721 910 915	0.025	36	28	14	50
32	40	25	16	20	721 910 916	0.026	36	30	14	52
32	40	32	16	25	721 910 917	0.031	36	33	14	55
40	50	25	16	20	721 910 918	0.045	44	34	18	60
40	50	32	16	25	721 910 919	0.052	44	37	18	63
40	50	40	16	32	721 910 920	0.058	44	40	18	66
50	63	32	16	25	721 910 921	0.092	54	42	23	73
50	63	40	16	32	721 910 922	0.098	54	45	23	76
50	63	50	16	40	721 910 923	0.111	54	49	23	80
63	75	40	16	32	721 910 924	0.127	62	46	24	84
63	75	50	16	40	721 910 925	0.139	62	50	24	88
63	75	63	16	50	721 910 926	0.167	62	55	24	93
75	90	50	16	40	721 910 927	0.224	74	56	30	100
75	90	63	16	50	721 910 928	0.253	74	61	30	105
75	90	75	16	63	721 910 929	0.265	74	68	30	112



Reducing bush short PVC-U metric

Model:

- With solvent cement spigot and socket metric

	d (mm)	d1 (mm)	PN (bar)	Code	Weight (kg)	z (mm)	L (mm)
*	12	8	16	721 900 329	0.002	2	14
*	16	12	16	721 900 331	0.002	2	14
*	20	16	16	721 900 334	0.002	2	16
*	25	20	16	721 900 337	0.004	3	19
*	32	20	16	721 900 342	0.014	6	22
*	32	25	16	721 900 341	0.009	3	22
	40	20	16	721 900 348	0.021	10	26
	40	25	16	721 900 347	0.021	7	26
*	40	32	16	721 900 346	0.016	4	26
	50	20	16	721 900 355	0.037	15	31
	50	25	16	721 900 354	0.034	12	31
	50	32	16	721 900 353	0.036	9	31
*	50	40	16	721 900 352	0.030	5	31
	63	32	16	721 900 360	0.064	16	38
	63	40	16	721 900 359	0.067	12	38
*	63	50	16	721 900 358	0.058	7	38
	75	50	16	721 900 365	0.109	13	44
*	75	63	16	721 900 364	0.078	6	44
	90	50	16	721 900 372	0.181	20	51
	90	63	16	721 900 371	0.183	13	51
*	90	75	16	721 900 370	0.135	7	51
	110	50	16	721 900 379	0.316	30	61
	110	63	16	721 900 378	0.308	23	61
	110	75	16	721 900 377	0.295	17	61
*	110	90	16	721 900 376	0.259	10	61
	125	90	16	721 900 381	0.465	18	69
*	125	110	16	721 900 380	0.267	8	69
	140	90	16	721 900 386	0.562	25	76
*	140	110	16	721 900 385	0.605	15	76
*	140	125	16	721 900 384	0.331	7	76
	160	90	16	721 900 391	0.751	35	86
	160	110	16	721 900 390	0.883	25	86
*	160	140	16	721 900 388	0.551	10	86
	200	110	10	721 900 393	1.985	45	108
	200	125	10	721 900 325	2.024	37	108
	200	140	10	721 900 394	1.928	29	108
*	200	160	10	721 900 392	1.085	20	108
	225	110	10	721 900 397	2.544	57	120
	225	125	10	721 900 399	2.563	49	120
	225	140	10	721 900 398	2.609	41	120
	225	160	10	721 900 396	2.199	31	119
*	225	200	10	721 900 181	1.360	13	119
	250	125	10	721 900 326	3.150	11	131
	250	140	10	721 900 300	3.200	54	133
	250	160	10	721 900 301	3.390	44	133
*	250	200	10	721 900 302	3.198	24	133
*	250	225	10	721 900 303	1.686	11	133
	280	140	10	721 900 307	4.157	69	148
	280	160	10	721 900 308	4.170	60	148
	280	200	10	721 900 304	4.577	39	148
*	280	225	10	721 900 305	4.409	27	146
*	280	250	10	721 900 306	2.515	14	148
	315	160	6	721 900 313	5.188	77	166
	315	200	6	721 900 309	5.480	57	166
	315	225	6	721 900 310	6.035	44	166
*	315	250	6	721 900 311	6.481	32	166
*	315	280	6	721 900 312	4.055	28	167
	355	315	6	721 900 315	5.792	23	206

table continued on the next page



	d (mm)	d1 (mm)	PN (bar)	Code	Weight (kg)	z (mm)	L (mm)
	400	250	6	721 900 319	11.528	60	206
	400	280	6	721 900 320	11.366	60	206
*	400	315	6	721 900 321	13.006	42	206
*	400	355	6	721 900 322	7.524	22	206

Flange adaptors and flanges



Flange adaptor PVC-U Combined jointing face flat and serrated metric

Model:

- Solvent cement socket metric
- d63 - d400: combined jointing face flat and serrated
- Gasket: profile flange gasket EPDM code no. 748 440 705-725, FPM code no. 749 440 705-725 or flat gasket EPDM code no. 748 440 705-725, only use O-ring EPDM code no. 748 410 000-174, FPM code no. 749 410 000-174 in combination with counterpart flange adaptor code no. 721 810 105-123
- Flange: PVC-U code no. 721 700 005-140, PP with steel ring code no. 727 700 206-225, backing flange PP-V for socket systems metric code no. 727 700 406-425

Note:

* bevel on pipe may be needed if used with butterfly valve type 037/038/039

The flat gasket affects the maximum allowable operating pressure!

DN (mm)	d (inch)	d (mm)	PN (bar)	Code	Weight (kg)	D1 (mm)	z (mm)	L (mm)	D (mm)	L1 (mm)
10		16	16	721 800 105	0.006	29	3	17	22	6
15		20	16	721 800 106	0.009	34	3	19	27	6
20		25	16	721 800 107	0.015	41	3	22	33	7
25		32	16	721 800 108	0.024	50	3	25	41	7
32		40	16	721 800 109	0.039	61	3	29	50	8
40		50	16	721 800 110	0.056	73	3	34	61	8
50		63	16	721 790 111	0.103	90	3	41	77	9
65	2 ½	75	16	721 790 112	0.159	106	3	47	91	10
80		90	16	721 790 113	0.253	125	5	56	108	11
100		110	16	721 790 114	0.417	150	5	66	131	12
100		125	16	721 790 115	0.533	170	5	74	148	13
125	5	140	16	721 790 116	0.725	188	5	81	165	14
150		160	16	721 790 117	1.093	213	5	91	188	16
*	200	200	10	721 790 119	1.460	250	6	112	224	24
	200	225	10	721 790 120	1.743	274	6	125	248	25
*	250	250	10	721 790 121	2.203	303	9	140	274	23
	250	280	10	721 790 122	2.930	329	5	151	308	23
*	300	315	6	721 790 123	4.455	379	8	172	346	27
	350	355	6	721 790 124	5.963	430	10	194	384	32
	400	400	6	721 790 125	9.041	482	10	216	438	34

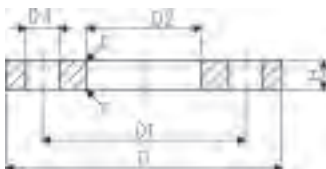


Flange adaptor PVC-U Joining face with O-ring groove metric

Model:

- Solvent cement socket metric
- Counterpart: flange adaptor flat code no. 721 800 105-721 790 111-125, combined flange adaptor (d160, d200, d225, d280, d315)
- Gasket: O-ring EPDM code no. 748 410 000-176, FPM code no. 749 410 000-176
- Flange: PVC-U code no. 721 700 005-138, PP/steel code no. 727 700 206-223, PP-V for socket systems metric code no. 727 700 406-423

d (inch)	d (mm)	DN (mm)	PN (bar)	Code	Weight (kg)	D1 (mm)	z (mm)	D (mm)	L (mm)	L1 (mm)
	16	10	16	721 810 105	0.008	29	6	22	20	9
	20	15	16	721 810 106	0.011	34	6	27	22	9
	25	20	16	721 810 107	0.018	41	6	33	25	10
	32	25	16	721 810 108	0.027	50	6	41	28	10
	40	32	16	721 810 109	0.046	61	8	50	34	13
	50	40	16	721 810 110	0.068	73	8	61	39	13
	63	50	16	721 810 111	0.120	90	8	77	46	14
2 ½	75	65	16	721 810 112	0.183	106	8	91	52	15
	90	80	16	721 810 113	0.286	125	10	108	61	16
	110	100	16	721 810 114	0.478	150	11	131	72	18
	125	100	16	721 810 115	0.607	170	11	148	80	19
5	140	125	16	721 810 116	0.804	188	11	165	87	20
	160	150	16	721 810 117	1.226	213	11	188	97	22
	200	200	10	721 810 119	1.593	250	12	224	118	30
	225	200	10	721 810 120	1.878	274	12	248	131	31
	250	250	10	721 810 121	2.175	303	9	274	140	23
	280	250	10	721 810 122	3.170	329	13	308	158	30
	315	300	6	721 810 123	4.891	379	17	346	180	35



Backing flange PVC-U metric

Model:

- For socket systems metric and BS
- Connecting dimension: ISO 7005, EN 1092, BS 4504, DIN 2501
- **Bolt circle PN 10**
- Maximum medium- or ambient temperature 45 °C

¹⁾ Connecting dimension: ISO 2536, bolt circle acc. DN125, suitable for flange adaptor d125/ DN100

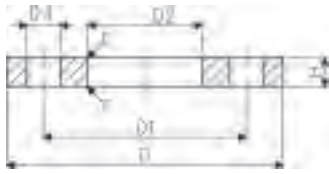
²⁾ Connecting dimension: ISO 2536, bolt circle acc. DN225, suitable for flange adaptor d250/ DN250

³⁾ Not for BS

AL: number of holes

d (mm)	Size (inch)	DN (mm)	PN (bar)	Code	Weight (kg)
16	¾	10	10	721 700 005	0.053
20	½	15	10	721 700 006	0.067
25	¾	20	10	721 700 007	0.092
32	1	25	10	721 700 008	0.133
40	1 ¼	32	10	721 700 009	0.198
50	1 ½	40	10	721 700 010	0.247
63	2	50	10	721 700 011	0.312
75	2 ½	65	10	721 700 012	0.376
90	3	80	10	721 700 013	0.464
3	110	4	100	721 700 014	0.543
1	125	4 ½	125	721 700 015	0.904
	140	5	125	721 700 016	0.758
	160	6	150	721 700 017	1.009
	200	7	200	721 700 019	1.669
	225	8	200	721 700 020	1.377
	250	9	250	721 700 021	2.376

table continued on the next page



	d	Size	DN	PN	Code	Weight
	(mm)	(inch)	(mm)	(bar)		(kg)
2	250	9	225	6	721 700 136	1.800
	280	10	250	6	721 700 137	1.746
	315	12	300	6	721 700 138	2.349
	355	14	350	6	721 700 139	3.485
	400	16	400	6	721 700 140	4.526

	d	D	D1	D2	D3	H	r	AL	SC
	(mm)	(mm)	(mm)	(mm)	(mm)	(mm)	(mm)		
	16	90	60	23	14	10	1	4	M12
	20	95	65	28	14	11	1	4	M12
	25	105	75	34	14	12	2	4	M12
	32	115	85	42	14	14	2	4	M12
	40	140	100	51	18	15	2	4	M16
	50	150	110	62	18	16	2	4	M16
	63	165	125	78	18	18	3	4	M16
	75	185	145	92	18	19	3	4	M16
	90	200	160	110	18	20	3	8	M16
3	110	220	180	133	18	22	3	8	M16
1	125	250	210	150	18	26	5	8	M16
	140	250	210	167	18	26	4	8	M16
	160	285	240	190	22	28	4	8	M20
	200	340	295	226	22	32	4	8	M20
	225	340	295	250	22	32	4	8	M20
	250	395	350	277	22	36	4	12	M20
2	250	370	325	277	22	36	4	8	M20
	280	395	350	310	22	36	4	12	M20
	315	445	400	348	22	36	4	12	M20
	355	505	460	388	22	38	5	16	M20
	400	565	515	442	26	42	5	16	M24

Backing flange PVC-U Inch ANSI

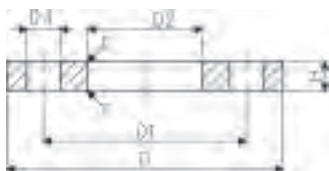
Model:

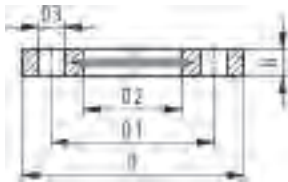
- For socket systems metric and BS
- Connecting dimension: ANSI/ASME B 16.5 class 150, ASTM D 4024, BS 1560, BS EN 1759
- **Bolt circle class 150**

* Only for use with metric flange adaptors

AL: number of holes

	Size	d	DN	PN	Code	Weight	D	D1	D2	D3	H	r	AL
	(inch)	(mm)	(mm)	(bar)		(kg)	(mm)	(mm)	(mm)	(mm)	(mm)	(mm)	
	½		15	10	721 702 206	0.068	95	60	28	16	11	1	4
	¾		20	10	721 702 207	0.090	105	70	34	16	12	2	4
	1		25	10	721 702 208	0.128	115	79	42	16	14	2	4
	1 ¼		32	10	721 702 209	0.203	140	89	51	16	15	2	4
	1 ½		40	10	721 702 210	0.238	150	98	62	16	16	2	4
	2		50	10	721 702 211	0.302	165	121	78	19	18	3	4
	2 ½		65	10	721 702 212	0.369	185	140	92	19	19	3	4
	3		80	10	721 702 213	0.509	200	152	110	19	20	3	4
	4		100	10	721 702 214	0.516	220	190	138	19	22	3	8
*	4	110	100	10	161 483 180	0.538	220	190	133	19	22	3	8
	5		125	10	721 702 216	0.737	250	216	167	22	26	4	8
	6		150	10	721 702 217	1.910	285	241	200	22	28	4	8
	8		200	10	721 702 220	1.360	340	298	250	22	32	4	8





Backing flange PP-V metric For socket systems metric and BS

Model:

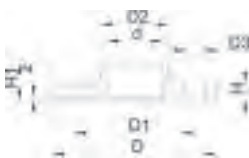
- Connecting dimension: ISO 7005, EN 1092, BS 4504, DIN 2501
- **Bolt circle PN 10**
- Full-plastic flange PP-GF (30 % glass-fibre reinforced)
- 1) Suitable for socket- and butt fusion systems
- 2) Not for BS
- * Combined version, metric-ANSI
- AL: number of holes

	d	DN	PN	Code	Weight	D	D1	D2	D3	H	AL	SC
	(mm)	(mm)	(bar)		(kg)	(mm)	(mm)	(mm)	(mm)	(mm)		
1	20	15	16	727 700 406	0.093	95	65	28	14	16	4	M12
1	25	20	16	727 700 407	0.120	105	75	34	14	17	4	M12
1	32	25	16	727 700 408	0.151	115	85	42	14	18	4	M12
1	40	32	16	727 700 409	0.244	140	100	51	18	20	4	M16
1	50	40	16	727 700 410	0.297	150	110	62	18	22	4	M16
1	63	50	16	727 700 411	0.362	165	125	78	18	24	4	M16
1	75	65	16	727 700 412	0.487	185	145	92	18	26	4	M16
	90	80	16	727 700 413	0.550	200	160	110	18	27	8	M16
2	110	100	16	727 700 414	0.640	220	180	133	18	28	8	M16
	140	125	16	727 700 416	0.781	250	210	167	18	30	8	M16
	160	150	16	727 700 417	1.050	285	241	190	22	32	8	M20
*	200	200	16	727 700 419	1.629	340	297	226	22	34	8	M20
*	225	200	16	727 700 420	1.400	340	297	250	22	34	8	M20
	250	250	16	727 700 421	2.229	395	350	277	22	38	12	M20
	280	250	16	727 700 422	1.651	395	350	310	22	38	12	M20
	315	300	16	727 700 423	2.461	445	400	348	22	42	12	M20
	355	350	10	727 700 424	3.000	515	460	388	22	46	16	M20
	400	400	10	727 700 425	5.135	574	515	442	26	50	16	M24

Fixed flange PVC-U Joining face flat metric

Model:

- **Bolt circle PN 10**
- Solvent cement socket metric
- Connecting dimension: ISO 7005 PN 10, EN 1092 PN 10, DIN 2501 PN 10, BS 4504 PN 10
- * Combined Flange, connecting dimensions EN1092 PN 10 and ANSI B 16.5 Class 150

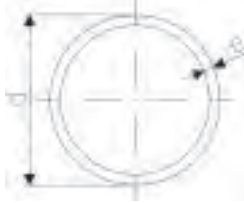


	d	DN	Size	PN	Code	Weight
	(mm)	(mm)	(inch)	(bar)		(kg)
	20	15	½	16	721 730 206	0.098
	25	20	¾	16	721 730 207	0.130
	32	25	1	16	721 730 208	0.183
	40	32	1 ¼	16	721 730 209	0.305
	50	40	1 ½	16	721 730 210	0.365
	63	50	2	16	721 730 211	0.510
*	75	65	2 ½	10	721 730 212	0.520
*	90	80	3	10	721 730 213	0.720
*	110	100	4	10	721 730 214	0.920
*	140	125	5	10	721 730 216	1.380
*	160	150	6	10	721 730 217	2.039

	d	D	D1	D2	D3	z	H	H1	AL	SC
	(mm)	(mm)	(mm)	(mm)	(mm)	(mm)	(mm)	(mm)		
	20	95	65	27	14	3	12	19	4	M12
	25	105	75	33	14	3	13	22	4	M12
	32	115	85	41	14	3	14	25	4	M12
	40	140	100	51	18	3	17	29	4	M16
	50	150	110	62	18	3	17	34	4	M16

table continued on the next page

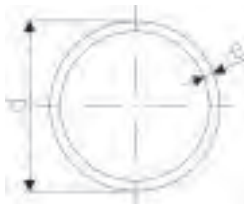
Pipes



Pipe PVC-U grey class E 15 bar at 20°C

- Material: PVC-U, Polyvinylchloride unplasticised
- Dimensions: BS EN 1452 Part 1 & 2 (formerly BS 3505)
- Pipe length: 6m with plain ends
- Minimum order quantity: 1 length

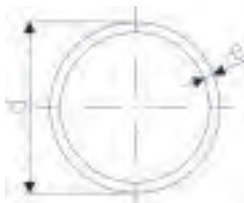
PN (bar)	Size (NB) (inch)	Code	Weight (kg/m)	e (mm)	di (mm)	d (mm)
15	3/8	161 018 080	0.114	1.5	14.1	17.1
15	1/2	161 018 082	0.161	1.7	17.9	21.3
15	3/4	161 018 083	0.225	1.9	22.9	26.7
15	1	161 018 084	0.325	2.2	29.0	33.4
15	1 1/4	161 018 085	0.503	2.7	36.8	42.2
15	1 1/2	161 018 086	0.659	3.1	42.1	48.3
15	2	161 018 087	1.038	3.9	52.5	60.3
16	2 1/2	161 017 112	1.820	5.6	58.2	75.0
15	3	161 018 088	2.245	5.7	77.5	88.9
15	4	161 018 089	3.667	7.3	99.7	114.3
16	5	161 017 116	6.215	10.3	119.4	140.0



Pipe PVC-U grey class D 12 bar at 20°C

- Material: PVC-U, Polyvinylchloride unplasticised
- Dimensions: BS EN 1452 Part 1 & 2 (formerly BS 3505)
- Pipe length: 6m with plain ends
- Minimum order quantity: 1 length

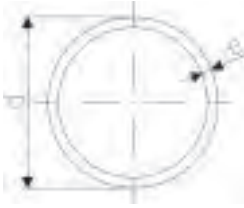
Size (NB) (inch)	PN (bar)	Code	Weight (kg/m)	e (mm)	di (mm)	d (mm)
1 1/4	12	161 018 059	0.420	2.2	37.8	42.2
1 1/2	12	161 018 060	0.550	2.5	43.3	48.3
2	12	161 018 061	0.900	3.1	54.1	60.3
3	12	161 018 063	1.930	4.6	79.7	88.9
4	12	161 018 064	3.230	6.0	102.3	114.3



Pipe PVC-U grey class C 9 bar at 20°C

- Material: PVC-U, Polyvinylchloride unplasticised
- Dimensions: BS EN 1452 Part 1 & 2 (formerly BS 3505)
- Pipe length: 6m with plain ends
- Minimum order quantity: 1 length

Size (NB) (inch)	PN (bar)	Code	Weight (kg/m)	e (mm)	di (mm)	d (mm)
2	9	161 018 036	0.694	2.5	55.3	60.3
3	9	161 018 038	1.434	3.5	81.9	88.9
4	9	161 018 039	2.360	4.5	105.3	114.3
6	9	161 018 042	5.058	6.6	155.1	168.3
8	9	161 018 045	1.388	7.8	203.5	219.1

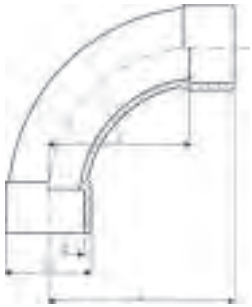


Pipe PVC-U grey class 7 (T) 12 bar at 20°C

- Thick wall pipe to allow for threading
- Material: PVC-U, Polyvinylchloride unplasticised
- Dimensions: BS EN 1452 Part 1 & 2 (formerly BS 3505)
- Pipe length: 6m with plain ends
- Minimum order quantity: 1 length

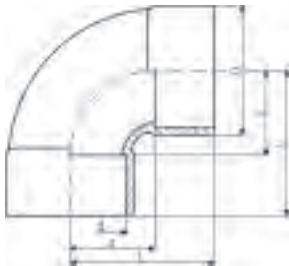
Size (NB) (inch)	PN (bar)	Code	Weight (kg/m)	e (mm)	di (mm)	d (mm)
3/8	12	161 018 255	0.323	3.8	9.5	17.1
1/2	12	161 018 256	0.051	4.0	13.3	21.3
3/4	12	161 018 257	0.070	4.2	18.3	26.7
1	12	161 018 258	0.103	4.8	23.8	33.4
1 1/4	12	161 018 259	0.143	5.2	31.8	42.2
1 1/2	12	161 018 260	0.175	5.5	37.3	48.3
2	12	161 018 261	1.430	6.0	48.3	60.3

Fittings



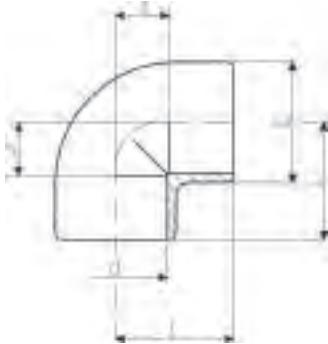
Bend 90° PVC-U Inch BS

d (inch)	PN (bar)	d (mm)	Code	Weight (kg)	z (mm)	D (mm)	L (mm)
½	15		721 001 106	0.026	40	29	58
¾	15		721 001 107	0.047	50	35	71
1	15		721 001 108	0.069	64	43	88
1 ¼	15		721 001 109	0.206	80	54	109
1 ½	15		721 001 110	0.312	100	64	131
2	15		721 001 111	0.556	126	76	163
2 ½	16	75	721 000 112	0.798	150	90	194
3	15		721 001 113	1.763	180	113	231
4	15		721 001 115	2.667	220	137	284
5	16	140	721 000 116	5.204	280	168	356
6	15		721 001 117	7.700	320	201	411



Bend 90° short pattern PVC-U Inch BS

d (inch)	PN (bar)	Code	Weight (kg)	z (mm)	D (mm)	L (mm)
8	9	721 011 120	8.297	168	256	287



Elbow 90° PVC-U Inch BS

d (inch)	PN (bar)	Code	Weight (kg)	D (mm)	L (mm)	z (mm)
3/8	15	721 101 105	0.016	24	25	10
1/2	15	721 101 106	0.022	27	30	13
3/4	15	721 101 107	0.025	33	34	14
1	15	721 101 108	0.038	40	39	17
1 1/4	15	721 101 109	0.079	51	49	22
1 1/2	15	721 101 110	0.116	58	56	26
2	15	721 101 111	0.215	72	68	32
2 1/2	16	721 100 112	0.336	87	83	40
3	15	721 101 113	0.606	107	97	46
4	15	721 101 115	1.343	137	122	59
5	16	721 100 116	1.945	162	146	70
6	15	721 101 117	4.121	201	176	86



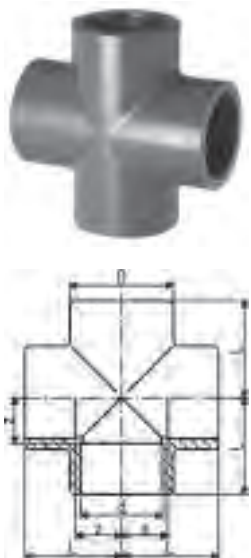
Elbow 45° PVC-U Inch BS

d (inch)	PN (bar)	Code	Weight (kg)	D (mm)	L (mm)	z (mm)
3/8	15	721 151 105	0.008	22	19	4
1/2	15	721 151 106	0.012	27	21	5
3/4	15	721 151 107	0.020	33	25	6
1	15	721 151 108	0.037	41	30	8
1 1/4	15	721 151 109	0.060	51	37	10
1 1/2	15	721 151 110	0.089	58	41	11
2	15	721 151 111	0.137	72	50	14
2 1/2	16	721 150 112	0.253	87	61	17
3	15	721 151 113	0.534	107	70	20
4	15	721 151 115	0.957	134	89	25
5	16	721 150 116	1.570	162	108	32
6	15	721 151 117	2.900	198	129	38
8	9	721 151 120	5.214	250	168	52



Tee 90° equal PVC-U Inch BS

d (inch)	PN (bar)	Code	Weight (kg)	D (mm)	L (mm)	z (mm)
3/8	15	721 201 105	0.018	25	25	10
1/2	15	721 201 106	0.036	30	30	13
3/4	15	721 201 107	0.051	35	37	16
1	15	721 201 108	0.079	43	43	19
1 1/4	15	721 201 109	0.105	50	51	22
1 1/2	15	721 201 110	0.157	57	56	26
2	15	721 201 111	0.294	72	68	32
2 1/2	16	721 200 112	0.476	87	83	39
3	15	721 201 113	0.847	107	97	46
4	15	721 201 115	1.864	138	122	59
5	16	721 200 116	3.410	169	147	71
6	15	721 201 117	5.521	202	176	86
8	9	721 201 120	10.742	256	233	114



Cross PVC-U Inch BS

d (inch)	PN (bar)	Code	Weight (kg)	D (mm)	L (mm)	z (mm)
3/8	12	721 301 107	0.050	36	33	14
1	12	721 301 108	0.081	44	39	17
1 1/4	12	721 301 109	0.130	53	49	22
1 1/2	12	721 301 110	0.299	64	60	30
2	12	721 301 111	0.556	80	74	37
2 1/2	10	721 300 112	0.725	92	83	40



Tee 45° PVC-U Inch BS

d (inch)	PN (bar)	Code	Weight (kg)	D (mm)	L (mm)	L1 (mm)	z (mm)	z1 (mm)
½	9	721 251 106	0.035	28	68	46	30	6
¾	9	721 251 107	0.052	33	83	55	35	8
1	9	721 251 108	0.090	41	99	67	43	8
1 ¼	9	721 251 109	0.145	50	118	82	55	9
1 ½	9	721 251 110	0.274	60	140	97	67	13
2	9	721 251 111	0.476	74	175	123	87	16
2 ½	6	721 250 112	0.816	91	207	145	101	18
3	6	721 251 113	1.324	107	245	173	122	20
4	6	721 251 115	2.403	134	298	210	147	25
5	6	721 250 116	5.628	168	376	266	190	34



Socket equal PVC-U Inch BS

d (inch)	PN (bar)	Code	Weight (kg)	D (mm)	L (mm)	z (mm)
¾	15	721 911 105	0.007	23	32	3
½	15	721 911 106	0.011	27	36	3
¾	15	721 911 107	0.018	33	45	3
1	15	721 911 108	0.029	41	51	3
1 ¼	15	721 911 109	0.048	51	57	3
1 ½	15	721 911 110	0.070	58	63	3
2	15	721 911 111	0.128	72	77	3
2 ½	16	721 910 112	0.188	87	92	4
3	15	721 911 113	0.350	104	107	7
4	15	721 911 115	0.606	134	135	8
5	16	721 910 116	1.118	162	159	7
6	15	721 911 117	1.800	197	192	11
8	9	721 911 120	4.140	253	248	10