

PVC-C

Product Range International 2015

Piping systems for
industrial application

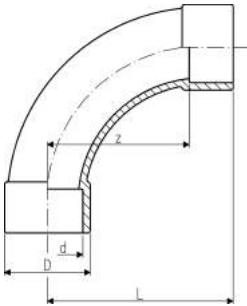


Fittings

Bend 90° PVC-C metric



- Radius = 2 d



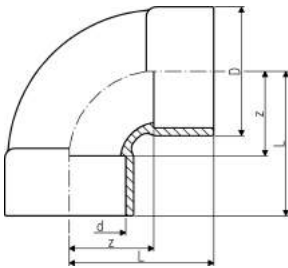
PF 2 32 450 009

| d [mm] | PN [bar] | Code | SP | Weight [kg] | z [mm] | D [mm] | L [mm] |
|-----------|-------------|--------------------|----|----------------|-----------|-----------|-----------|
| 20 | 16 | 723 000 106 | 10 | 0.032 | 40 | 27 | 58 |
| 25 | 16 | 723 000 107 | 10 | 0.055 | 50 | 35 | 71 |
| 32 | 16 | 723 000 108 | 10 | 0.080 | 64 | 38 | 88 |
| 40 | 16 | 723 000 109 | 30 | 0.143 | 80 | 54 | 109 |
| 50 | 16 | 723 000 110 | 5 | 0.327 | 100 | 61 | 131 |
| 63 | 16 | 723 000 111 | 17 | 0.547 | 126 | 76 | 163 |
| 75 | 16 | 723 000 112 | 5 | 0.847 | 150 | 90 | 194 |
| 90 | 16 | 723 000 113 | 5 | 1.470 | 180 | 113 | 231 |
| 110 | 16 | 723 000 114 | 5 | 2.943 | 220 | 137 | 284 |
| 160 | 16 | 723 000 117 | 1 | 5.247 | 320 | 192 | 406 |

Bend 90° short pattern PVC-C metric

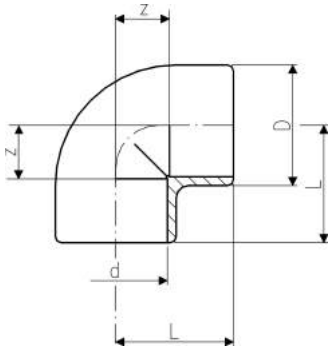


- Radius = 0,75 d



PF 2 32 450 009

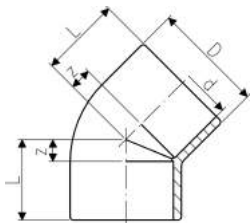
| d [mm] | PN [bar] | Code | SP | Weight [kg] | z [mm] | D [mm] | L [mm] |
|-----------|-------------|--------------------|----|----------------|-----------|-----------|-----------|
| 225 | 10 | 723 010 120 | 1 | 7.930 | 168 | 256 | 287 |



PF 2 32 450 001

Elbow 90° PVC-C metric

| d [mm] | PN [bar] | Code | SP | Weight [kg] | z [mm] | D [mm] | L [mm] |
|-----------|-------------|-------------|----|----------------|-----------|-----------|-----------|
| 16 | 16 | 723 100 105 | 10 | 0.015 | 9 | 21 | 23 |
| 20 | 16 | 723 100 106 | 10 | 0.014 | 11 | 25 | 27 |
| 25 | 16 | 723 100 107 | 10 | 0.025 | 14 | 31 | 33 |
| 32 | 16 | 723 100 108 | 10 | 0.047 | 17 | 40 | 39 |
| 40 | 16 | 723 100 109 | 10 | 0.077 | 21 | 49 | 47 |
| 50 | 16 | 723 100 110 | 10 | 0.139 | 26 | 61 | 57 |
| 63 | 16 | 723 100 111 | 10 | 0.259 | 33 | 76 | 72 |
| 75 | 16 | 723 100 112 | 5 | 0.437 | 40 | 90 | 84 |
| 90 | 16 | 723 100 113 | 5 | 0.626 | 46 | 110 | 97 |
| 110 | 16 | 723 100 114 | 4 | 1.085 | 61 | 128 | 116 |
| 160 | 16 | 723 100 117 | 1 | 3.097 | 80 | 185 | 166 |

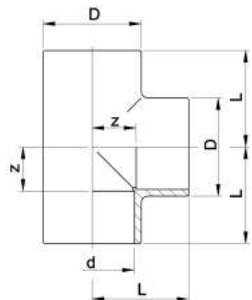


PF 2 32 450 002

Elbow 45° PVC-C metric

| d [mm] | PN [bar] | Code | SP | Weight [kg] | z [mm] | D [mm] | L [mm] |
|-----------|-------------|-------------|----|----------------|-----------|-----------|-----------|
| 16 | 16 | 723 150 105 | 10 | 0.008 | 5 | 21 | 19 |
| 20 | 16 | 723 150 106 | 10 | 0.011 | 5 | 25 | 21 |
| 25 | 16 | 723 150 107 | 10 | 0.021 | 6 | 31 | 25 |
| 32 | 16 | 723 150 108 | 10 | 0.037 | 8 | 40 | 30 |
| 40 | 16 | 723 150 109 | 5 | 0.063 | 10 | 49 | 36 |
| 50 | 16 | 723 150 110 | 5 | 0.110 | 12 | 61 | 43 |
| 63 | 16 | 723 150 111 | 10 | 0.205 | 14 | 76 | 52 |
| 75 | 16 | 723 150 112 | 5 | 0.323 | 17 | 88 | 61 |
| 90 | 16 | 723 150 113 | 5 | 0.526 | 20 | 106 | 71 |
| 110 | 16 | 723 150 114 | 10 | 0.782 | 28 | 137 | 89 |
| 160 | 16 | 723 150 117 | 1 | 2.384 | 36 | 185 | 122 |
| 225 | 10 | 723 150 120 | 1 | 4.833 | 49 | 250 | 168 |

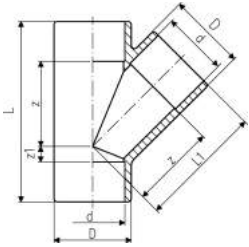
Tee 90° PVC-C metric



PF 2 32 450 003

| d [mm] | PN [bar] | Code | SP | Weight [kg] | z [mm] | D [mm] | L [mm] |
|-----------|-------------|-------------|----|----------------|-----------|-----------|-----------|
| 16 | 16 | 723 200 105 | 10 | 0.014 | 9 | 21 | 23 |
| 20 | 16 | 723 200 106 | 10 | 0.020 | 11 | 25 | 27 |
| 25 | 16 | 723 200 107 | 10 | 0.035 | 14 | 31 | 33 |
| 32 | 16 | 723 200 108 | 10 | 0.061 | 17 | 40 | 39 |
| 40 | 16 | 723 200 109 | 10 | 0.111 | 21 | 49 | 47 |
| 50 | 16 | 723 200 110 | 10 | 0.198 | 26 | 61 | 57 |
| 63 | 16 | 723 200 111 | 10 | 0.365 | 34 | 76 | 72 |
| 75 | 16 | 723 200 112 | 5 | 0.581 | 40 | 90 | 84 |
| 90 | 16 | 723 200 113 | 5 | 0.945 | 47 | 107 | 98 |
| 110 | 16 | 723 200 114 | 6 | 1.450 | 55 | 128 | 116 |
| 160 | 16 | 723 200 117 | 1 | 5.580 | 81 | 193 | 167 |
| 225 | 10 | 723 200 120 | 1 | 9.560 | 114 | 256 | 233 |

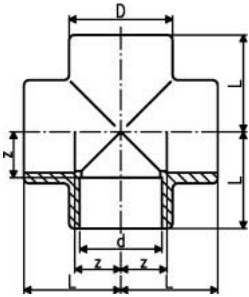
Tee 45° PVC-C metric



PF 2 32 450 026

| d [mm] | PN [bar] | Code | SP | Weight [kg] | z [mm] | z1 [mm] | D [mm] | L [mm] | L1 [mm] |
|-----------|-------------|--------------------|----|----------------|-----------|------------|-----------|-----------|------------|
| 20 | 10 | 723 250 106 | 10 | 0.039 | 30 | 6 | 28 | 68 | 46 |
| 25 | 10 | 723 250 107 | 10 | 0.062 | 36 | 9 | 33 | 83 | 55 |
| 32 | 10 | 723 250 108 | 10 | 0.102 | 45 | 10 | 41 | 99 | 67 |
| 40 | 10 | 723 250 109 | 10 | 0.172 | 56 | 10 | 50 | 118 | 82 |
| 50 | 10 | 723 250 110 | 10 | 0.289 | 66 | 12 | 60 | 140 | 97 |
| 63 | 10 | 723 250 111 | 10 | 0.449 | 85 | 14 | 74 | 175 | 123 |
| 75 | 6 | 723 250 112 | 5 | 0.857 | 101 | 18 | 91 | 207 | 145 |
| 90 | 6 | 723 250 113 | 1 | 1.334 | 122 | 20 | 107 | 245 | 173 |
| 110 | 6 | 723 250 114 | 3 | 2.677 | 149 | 27 | 134 | 298 | 210 |

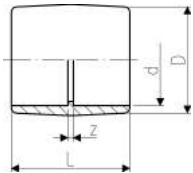
Cross PVC-C metric



PF 2 32 450 036

| d [mm] | PN [bar] | Code | SP | Weight [kg] | z [mm] | D [mm] | L [mm] |
|-----------|-------------|--------------------|----|----------------|-----------|-----------|-----------|
| 32 | 16 | 723 300 108 | 10 | 0.101 | 17 | 43 | 39 |
| 63 | 16 | 723 300 111 | 5 | 0.511 | 34 | 79 | 72 |

Socket PVC-C metric

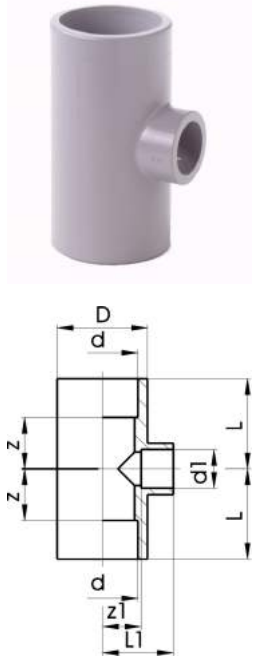


PF 2 32 450 004

| d [mm] | PN [bar] | Code | SP | Weight [kg] | z [mm] | D [mm] | L [mm] |
|-----------|-------------|--------------------|----|----------------|-----------|-----------|-----------|
| 16 | 16 | 723 910 105 | 10 | 0.008 | 3 | 22 | 31 |
| 20 | 16 | 723 910 106 | 10 | 0.010 | 3 | 26 | 35 |
| 25 | 16 | 723 910 107 | 10 | 0.017 | 3 | 31 | 41 |
| 32 | 16 | 723 910 108 | 10 | 0.029 | 3 | 39 | 47 |
| 40 | 16 | 723 910 109 | 10 | 0.049 | 3 | 49 | 55 |
| 50 | 16 | 723 910 110 | 10 | 0.085 | 3 | 61 | 65 |
| 63 | 16 | 723 910 111 | 10 | 0.155 | 3 | 76 | 79 |
| 75 | 16 | 723 910 112 | 10 | 0.204 | 4 | 87 | 92 |
| 90 | 16 | 723 910 113 | 10 | 0.338 | 5 | 110 | 107 |
| 110 | 16 | 723 910 114 | 5 | 0.765 | 5 | 131 | 132 |
| 160 | 16 | 723 910 117 | 2 | 1.605 | 8 | 183 | 180 |
| 225 | 10 | 723 910 120 | 1 | 3.644 | 10 | 253 | 248 |

Tee 90° reducing PVC-C metric

*Tee 90° delivered with the required reducing bushes



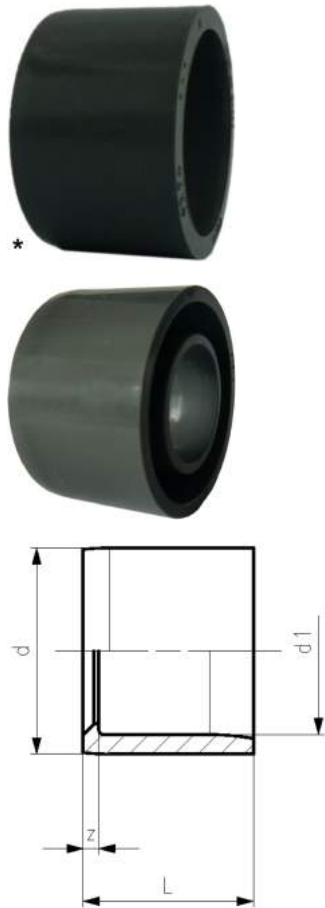
PF 2 32 450 010

| | d1 [mm] | d [mm] | PN [bar] | Code | SP | Weight [kg] | z1 [mm] | L1 [mm] | z [mm] | D [mm] | L [mm] |
|---|------------|-----------|-------------|--------------------|----|----------------|------------|------------|-----------|-----------|-----------|
| | 20 | 25 | 16 | 723 200 134 | 10 | 0.042 | 14 | 30 | 14 | 33 | 33 |
| | 25 | 32 | 16 | 723 200 138 | 10 | 0.069 | 17 | 36 | 17 | 41 | 39 |
| | 25 | 40 | 16 | 723 200 151 | 10 | 0.120 | 23 | 42 | 23 | 50 | 49 |
| | 32 | 40 | 16 | 723 200 147 | 10 | 0.120 | 23 | 45 | 23 | 50 | 49 |
| | 20 | 50 | 16 | 723 200 009 | 5 | 0.196 | 28 | 44 | 28 | 62 | 59 |
| | 25 | 50 | 16 | 723 200 010 | 5 | 0.192 | 28 | 47 | 28 | 62 | 59 |
| | 32 | 50 | 16 | 723 200 164 | 10 | 0.199 | 28 | 50 | 28 | 62 | 59 |
| | 25 | 63 | 16 | 723 200 011 | 10 | 0.358 | 34 | 53 | 34 | 77 | 73 |
| | 32 | 63 | 16 | 723 200 178 | 5 | 0.368 | 34 | 56 | 35 | 77 | 73 |
| | 50 | 63 | 16 | 723 200 170 | 5 | 0.096 | 34 | 65 | 35 | 77 | 73 |
| * | 63 | 75 | 16 | 723 200 184 | 8 | 0.766 | 47 | 84 | 41 | 92 | 84 |
| * | 32 | 90 | 16 | 723 200 142 | 6 | 1.436 | 75 | 97 | 46 | 111 | 97 |
| * | 63 | 90 | 16 | 723 200 145 | 5 | 1.166 | 66 | 97 | 46 | 111 | 97 |
| * | 32 | 110 | 16 | 723 200 135 | 3 | 2.796 | 101 | 116 | 55 | 128 | 116 |
| * | 90 | 110 | 16 | 723 200 137 | 3 | 2.677 | 71 | 116 | 55 | 128 | 116 |

Reducing bush short pattern PVC-C metric

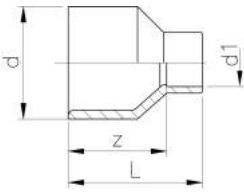
Model:

- With solvent cement spigot and socket metric



PF 2 32 450 017

| | d [mm] | d1 [mm] | PN [bar] | Code | SP | Weight [kg] | z [mm] | L [mm] |
|---|-----------|------------|-------------|--------------------|----|----------------|-----------|-----------|
| * | 20 | 16 | 16 | 723 900 334 | 10 | 0.004 | 2 | 16 |
| * | 25 | 20 | 16 | 723 900 337 | 10 | 0.004 | 3 | 19 |
| * | 32 | 20 | 16 | 723 900 342 | 10 | 0.015 | 6 | 22 |
| * | 32 | 25 | 16 | 723 900 341 | 10 | 0.009 | 4 | 22 |
| | 40 | 20 | 16 | 723 900 348 | 10 | 0.023 | 10 | 26 |
| | 40 | 25 | 16 | 723 900 347 | 10 | 0.024 | 7 | 26 |
| * | 40 | 32 | 16 | 723 900 346 | 10 | 0.017 | 4 | 26 |
| | 50 | 20 | 16 | 723 900 355 | 10 | 0.036 | 15 | 31 |
| | 50 | 25 | 16 | 723 900 354 | 10 | 0.037 | 12 | 31 |
| | 50 | 32 | 16 | 723 900 353 | 10 | 0.050 | 9 | 31 |
| * | 50 | 40 | 16 | 723 900 352 | 10 | 0.032 | 5 | 31 |
| | 63 | 32 | 16 | 723 900 360 | 10 | 0.086 | 16 | 38 |
| | 63 | 40 | 16 | 723 900 359 | 10 | 0.074 | 12 | 38 |
| * | 63 | 50 | 16 | 723 900 358 | 10 | 0.061 | 6 | 38 |
| * | 75 | 50 | 16 | 723 900 365 | 10 | 0.115 | 13 | 44 |
| * | 75 | 63 | 16 | 723 900 364 | 10 | 0.086 | 6 | 44 |
| | 90 | 50 | 16 | 723 900 372 | 10 | 0.196 | 20 | 51 |
| | 90 | 63 | 16 | 723 900 371 | 10 | 0.183 | 14 | 51 |
| * | 90 | 75 | 16 | 723 900 370 | 10 | 0.146 | 8 | 51 |
| * | 110 | 63 | 16 | 723 900 378 | 5 | 0.329 | 24 | 61 |
| * | 110 | 90 | 16 | 723 900 376 | 5 | 0.283 | 10 | 61 |
| | 160 | 110 | 16 | 723 900 390 | 5 | 0.956 | 25 | 86 |
| | 225 | 160 | 16 | 723 900 396 | 2 | 2.380 | 33 | 119 |



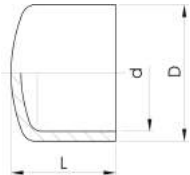
PF 2 32 450 035

Reducing bush long pattern PVC-C metric

Model:

- With solvent cement spigot and socket metric

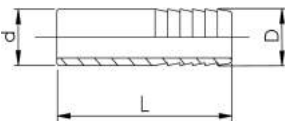
| d1 [mm] | d [mm] | PN [bar] | Code | SP | Weight [kg] | z [mm] | L [mm] |
|------------|-----------|-------------|--------------------|----|----------------|-----------|-----------|
| 20 | 32 | 16 | 723 910 342 | 10 | 0.021 | 30 | 46 |
| 25 | 40 | 16 | 723 910 347 | 10 | 0.036 | 36 | 55 |
| 25 | 50 | 16 | 723 910 354 | 10 | 0.058 | 44 | 63 |
| 32 | 63 | 16 | 723 910 360 | 10 | 0.110 | 54 | 76 |
| 40 | 75 | 16 | 723 910 366 | 5 | 0.165 | 62 | 88 |
| 63 | 90 | 16 | 723 910 371 | 5 | 0.311 | 74 | 112 |



PF 2 32 450 005

Cap PVC-C metric

| d [mm] | PN [bar] | Code | SP | Weight [kg] | D [mm] | L [mm] |
|-----------|-------------|--------------------|----|----------------|-----------|-----------|
| 16 | 16 | 723 960 105 | 10 | 0.008 | 26 | 24 |
| 20 | 16 | 723 960 106 | 10 | 0.011 | 30 | 25 |
| 25 | 16 | 723 960 107 | 10 | 0.018 | 37 | 30 |
| 32 | 16 | 723 960 108 | 10 | 0.029 | 44 | 34 |
| 40 | 16 | 723 960 109 | 10 | 0.046 | 55 | 41 |
| 50 | 16 | 723 960 110 | 10 | 0.064 | 64 | 44 |
| 63 | 16 | 723 960 111 | 5 | 0.120 | 80 | 54 |
| 75 | 16 | 723 960 112 | 5 | 0.162 | 87 | 65 |
| 90 | 16 | 723 960 113 | 10 | 0.315 | 112 | 77 |
| 110 | 16 | 723 960 114 | 5 | 0.692 | 145 | 101 |
| 160 | 10 | 723 960 117 | 2 | 1.599 | 188 | 130 |



PF 2 32 450 024

Hose nozzle PVC-C metric

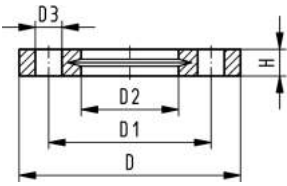
Model:

- With solvent cement spigot and parallel hose connection

| d [mm] | PN [bar] | Code | SP | Weight [kg] | D [mm] | L [mm] |
|-----------|-------------|--------------------|----|----------------|-----------|-----------|
| 16 | 16 | 723 960 405 | 10 | 0.009 | 16 | 57 |
| 20 | 16 | 723 960 406 | 10 | 0.016 | 20 | 73 |
| 25 | 16 | 723 960 407 | 10 | 0.023 | 25 | 79 |
| 32 | 16 | 723 960 408 | 10 | 0.038 | 30 | 89 |

Backing flanges

Backing flange PP-V For socket systems metric



¹⁾ Suitable for socket- and butt fusion systems (no pictograph on flange)

* Combined version, metric-ANSI

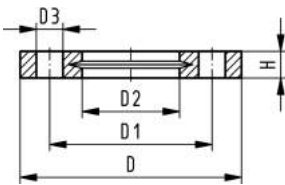
AL: number of holes

Model:

- UV-resistant. Applicable for outside applications
- With V-groove which applies force evenly on collar
- Connecting dimension: ISO 7005, EN 1092, BS 4504, DIN 2501
- **Bolt circle PN 10**
- Modern full-plastic flange PP-GF (30 % glass-fibre reinforced)
- With integrated bolt retainers as an assembly aid

| | d [mm] | DN [mm] | PN [bar] | Code | PF | SP | Weight [kg] |
|---|-----------|------------|-------------|--------------------|--------------|----|----------------|
| | 20 | 15 | 16 | 727 700 406 | 2 34 238 030 | 56 | 0.093 |
| | 25 | 20 | 16 | 727 700 407 | 2 34 238 030 | 38 | 0.120 |
| | 32 | 25 | 16 | 727 700 408 | 2 34 238 030 | 80 | 0.151 |
| | 40 | 32 | 16 | 727 700 409 | 2 34 238 030 | 40 | 0.244 |
| | 50 | 40 | 16 | 727 700 410 | 2 34 238 030 | 30 | 0.297 |
| | 63 | 50 | 16 | 727 700 411 | 2 34 238 030 | 25 | 0.362 |
| | 75 | 65 | 16 | 727 700 412 | 2 34 238 030 | 19 | 0.487 |
| | 90 | 80 | 16 | 727 700 413 | 2 34 238 030 | 15 | 0.550 |
| | 110 | 100 | 16 | 727 700 414 | 2 34 238 030 | 13 | 0.640 |
| | 140 | 125 | 16 | 727 700 416 | 2 34 238 030 | 10 | 0.781 |
| * | 160 | 150 | 16 | 727 700 417 | 2 34 238 032 | | |
| * | 200 | 200 | 16 | 727 700 419 | 2 34 238 032 | | |
| | 225 | 200 | 16 | 727 700 420 | 2 34 238 032 | | |
| | 250 | 250 | 16 | 727 700 421 | 2 34 238 030 | 0 | 2.229 |

| | d [mm] | D [mm] | D1 [mm] | D2 [mm] | D3 [mm] | H [mm] | AL | SC |
|---|-----------|-----------|------------|------------|------------|-----------|----|-----|
| | 20 | 95 | 65 | 28 | 14 | 16 | 4 | M12 |
| | 25 | 105 | 75 | 34 | 14 | 17 | 4 | M12 |
| | 32 | 115 | 85 | 42 | 14 | 18 | 4 | M12 |
| | 40 | 140 | 100 | 51 | 18 | 20 | 4 | M16 |
| | 50 | 150 | 110 | 62 | 18 | 22 | 4 | M16 |
| | 63 | 165 | 125 | 78 | 18 | 24 | 4 | M16 |
| | 75 | 185 | 145 | 92 | 18 | 26 | 4 | M16 |
| | 90 | 200 | 160 | 110 | 18 | 27 | 8 | M16 |
| | 110 | 220 | 180 | 133 | 18 | 28 | 8 | M16 |
| | 140 | 250 | 210 | 167 | 18 | 30 | 8 | M16 |
| * | 160 | 285 | 241 | 190 | 22 | 32 | 8 | M20 |
| * | 200 | 340 | 297 | 226 | 22 | 34 | 8 | M20 |
| | 225 | 340 | 297 | 250 | 22 | 34 | 8 | M20 |
| | 250 | 395 | 350 | 277 | 22 | 38 | 12 | M20 |



Backing flange PP-V For socket systems Inch ANSI

AL: number of holes

* Combined version, metric-ANSI

- 727701414, 727700417, 727700419: only for use with original metric flange adaptors
- 1) Suitable for socket- and butt fusion systems (no pictograph on flange)

Model:

- UV-resistant. Applicable for outside applications
- Connecting dimension: ANSI/ASME B 16.5 class 150, ASTM D 4024, BS 1560, BS EN 1759
- **Bolt circle class 150**
- Modern full-plastic flange PP-GF (30 % glass-fibre reinforced)
- With V-groove which applies force evenly on collar
- With integrated bolt-fixing as an assembly aid

| | Size [inch] | DN [mm] | d [mm] | PN [bar] | Code | SP | Weight [kg] |
|---|----------------|------------|-----------|-------------|--------------------|----|----------------|
| 1 | 1/2 | 15 | 20 | 16 | 727 701 406 | 56 | 0.091 |
| 1 | 3/4 | 20 | 25 | 16 | 727 701 407 | 38 | 0.120 |
| 1 | 1 | 25 | 32 | 16 | 727 701 408 | 80 | 0.147 |
| 1 | 1 1/4 | 32 | 40 | 16 | 727 701 409 | 40 | 0.246 |
| 1 | 1 1/2 | 40 | 50 | 16 | 727 701 410 | 30 | 0.299 |
| 1 | 2 | 50 | 63 | 16 | 727 701 411 | 25 | 0.361 |
| 1 | 2 1/2 | 65 | 75 | 16 | 727 701 412 | 19 | 0.492 |
| | 3 | 80 | 90 | 16 | 727 701 413 | 14 | 0.605 |
| | 4 | 100 | 110 | 16 | 727 701 414 | 12 | 0.704 |
| | 6 | 150 | 160 | 16 | 727 700 417 | | |
| * | 8 | 200 | 200 | 16 | 727 700 419 | | |
| * | 8 | 200 | 225 | 16 | 727 700 420 | | |

| | D [mm] | D1 [mm] | D2 [mm] | D3 [mm] | H [mm] | AL | SC |
|---|-----------|------------|------------|------------|-----------|----|-----|
| 1 | 95 | 60 | 28 | 16 | 16 | 4 | M12 |
| 1 | 105 | 70 | 34 | 16 | 17 | 4 | M12 |
| 1 | 115 | 79 | 42 | 16 | 18 | 4 | M12 |
| 1 | 140 | 89 | 51 | 16 | 20 | 4 | M16 |
| 1 | 150 | 98 | 62 | 16 | 22 | 4 | M16 |
| 1 | 165 | 121 | 78 | 19 | 24 | 4 | M16 |
| 1 | 185 | 140 | 92 | 19 | 26 | 4 | M16 |
| | 200 | 152 | 110 | 19 | 27 | 4 | M16 |
| | 229 | 190 | 133 | 19 | 28 | 8 | M16 |
| | 285 | 241 | 190 | 22 | 32 | 8 | M20 |
| * | 340 | 297 | 226 | 22 | 34 | 8 | M20 |
| * | 340 | 297 | 250 | 22 | 34 | 8 | M20 |

PF 2 34 238 032

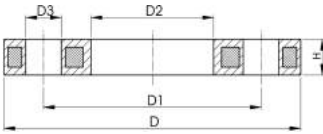


Backing Flange PP-Steel for Socket Systems Inch/ANSI

- 727701214, 727700217: only for use with original metric flange adaptors
- AL: number of holes

Model:

- For Flange Adaptors BS/ANSI
- Material: PP (30% glass-fibre reinforced) with steel ring
- UV-resistant. Applicable for outside applications
- Connecting dimension: ANSI/ASME B 16.5 class 150, ASTM D 4024, BS 1560, BS EN 1759
- **Bolt circle class 150**



| d [inch] | d [mm] | Code | Weight [lb] | D1 [mm] | D2 [mm] | D3 [mm] | D [mm] | H [mm] | AL | SC |
|-------------|-----------|--------------------|----------------|------------|------------|------------|-----------|-----------|----|-----|
| ½ | 20 | 727 701 206 | 0.470 | 60 | 28 | 16 | 95 | 12 | 4 | M12 |
| ¾ | 25 | 727 701 207 | 0.573 | 70 | 34 | 16 | 105 | 12 | 4 | M12 |
| 1 | 32 | 727 701 208 | 0.917 | 79 | 42 | 16 | 115 | 16 | 4 | M12 |
| 1 ¼ | 40 | 727 701 209 | 1.609 | 89 | 51 | 16 | 140 | 16 | 4 | M16 |
| 1 ½ | 50 | 727 701 210 | 1.784 | 98 | 62 | 16 | 150 | 18 | 4 | M16 |
| 2 | 63 | 727 701 211 | 1.909 | 121 | 78 | 19 | 165 | 18 | 4 | M16 |
| 2 ½ | 75 | 727 701 212 | 2.463 | 140 | 92 | 19 | 185 | 18 | 4 | M16 |
| 3 | 90 | 727 701 213 | 3.289 | 152 | 110 | 19 | 200 | 20 | 4 | M16 |
| 4 | 110 | 727 701 214 | 3.737 | 190 | 133 | 19 | 229 | 20 | 8 | M16 |
| 6 | 160 | 727 700 217 | | 240 | 190 | 22 | 285 | 24 | 8 | M20 |
| 8 | 225 | 727 701 220 | 9.861 | 298 | 250 | 22 | 340 | 27 | 8 | M20 |

PF 2 34 238 021